

2 Miles, Many Jurisdictions, 1 Solution

1992 Pierce Co identifies as a Premier Project for east-west route

2001 Sumner annexes area with pre-annexation agreement with Pierce County to finish the corridor



2002 Planning Completed

DONE Phase IA by Pacific/TIB

DONE Phase IB by Pacific/Pierce County/TIB

2022 Phase II by Pacific/TIB (today's Topic)

DONE Phase IV by Sumner/Pierce County/TIB

NOW Phase III (this project) 30% designed

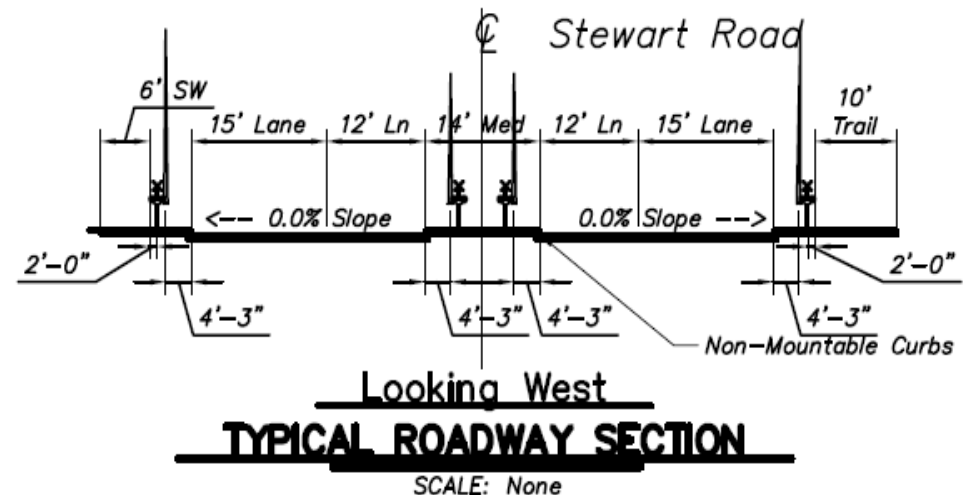
2022 Phase III (this project) shovel-ready



CITY OF
SUMNER
WASHINGTON

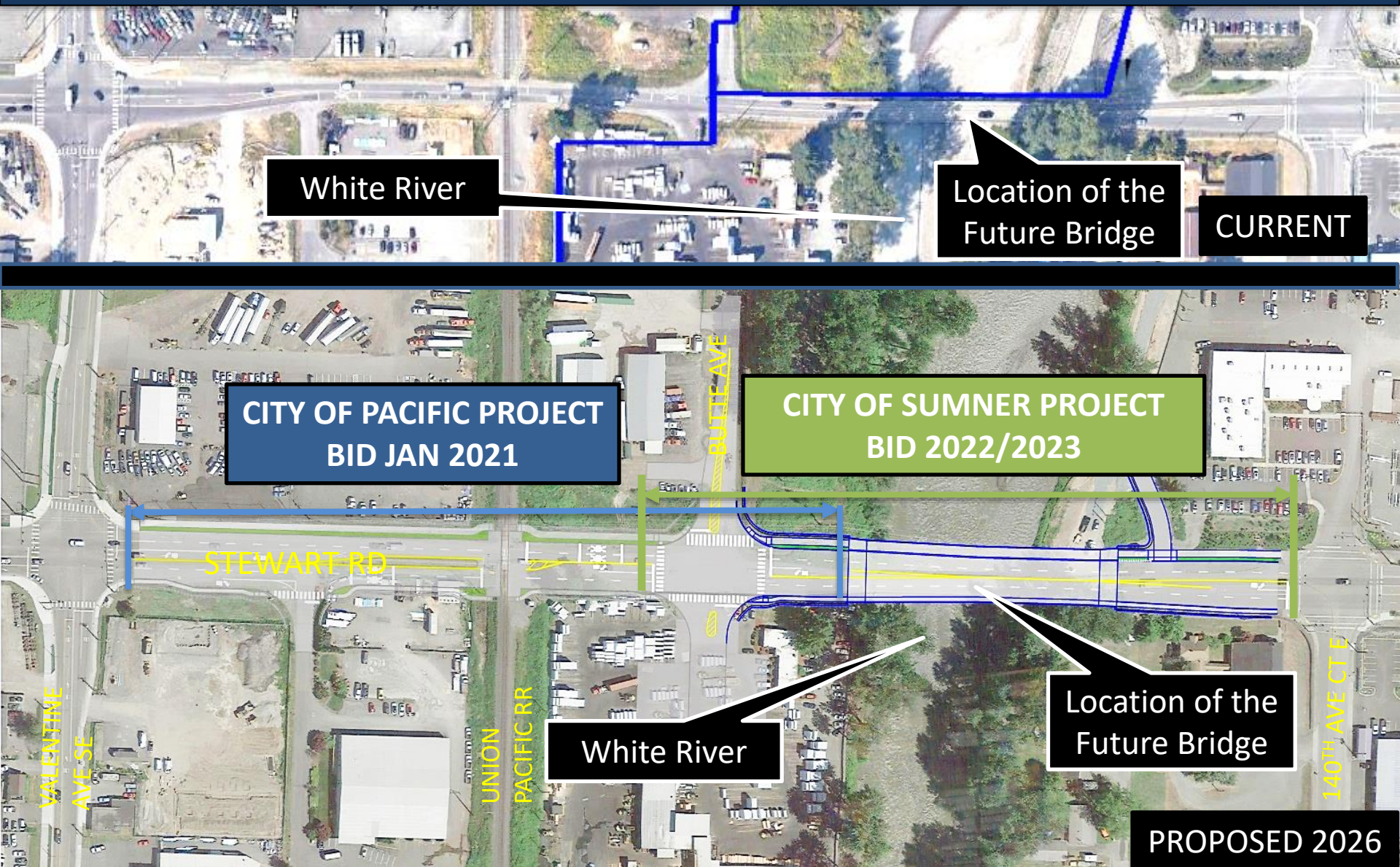
Pacific Project Objectives

- Widen Stewart Road
 - 5-lane section between Valentine and Butte
- Lengthen the UPRR Railroad Crossing
- Signalize Butte Avenue Intersection



Fun Fact: Pacific originally awarded \$5.6 Million from FMSIB to construct project as undercrossing

Project Overview



White River

Location of the
Future Bridge

CURRENT

CITY OF PACIFIC PROJECT
BID JAN 2021

CITY OF SUMNER PROJECT
BID 2022/2023

STEWART RD

White River

Location of the
Future Bridge

PROPOSED 2026

VALENTINE
AVE SE

UNION
PACIFIC RR

BUTTE AVE

140TH AVE CT E